

Improve claw health with  
a combination of artificial  
and human intelligence



---

Group:

**Palle Fjord Thomsen, Erik Jeppesen,  
Lasse Rose Malskær, Lars Arne Hjorth  
Nielsen, Rudolf Thøgersen, Mikkel  
Bernt Buch-vardt, Frank Madsen, Peter  
Raundal, Heidi Priess-Sørensen, Nynne  
Capion, klovbeskærere**

KU, SEGES, KVK

**Mælke**afgiftsfonden



Ministeriet for Fødevarer,  
Landbrug og Fiskeri

**godp**

# Digital claw health recording

Nordic collaboration since 2009 (DK, S, N, FIN)

SEGES, VikingDanmark, NAV

Freeware

Require userID



**Nordisk Klovatlas**

Beskrivelse af klovlidelserne



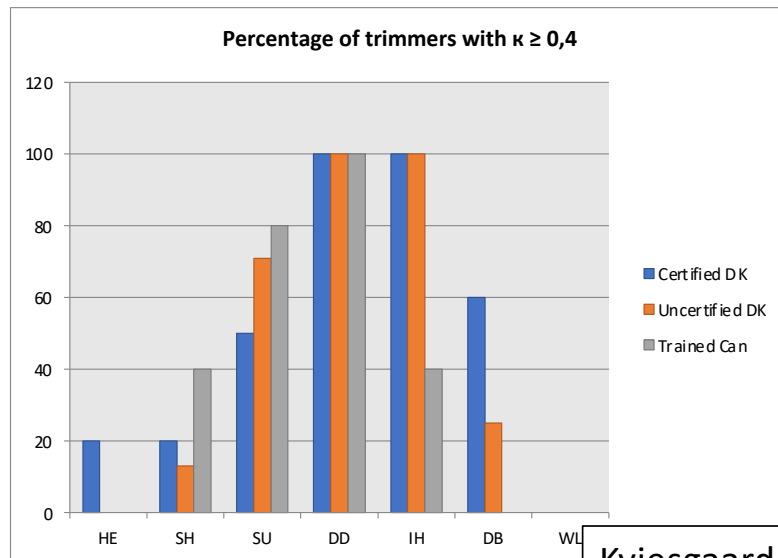
Et samarbejde mellem nordiske klov-eksperter  
Nordisk Klovatlas

# Quality of claw health records

**TABLE 3: Weighted kappa values for the agreement between the scores recorded by four claw trimmers and N. C.**

Trimmer	Number of cows recorded	Heel horn erosion	Sole haemorrhage	White line lesion	Interdigital dermatitis	Digital dermatitis
1	113	0.16	0.88	0.48	0.27	0.65
2	121	0.34	0.80	0.74	0.63	0.63
3	116	0.03	0.78	0.40	0.50	0.78
4	107	0.48	0.76	0.75	0.63	0.42

Capion et al., 2008



Kviesgaard, 2013

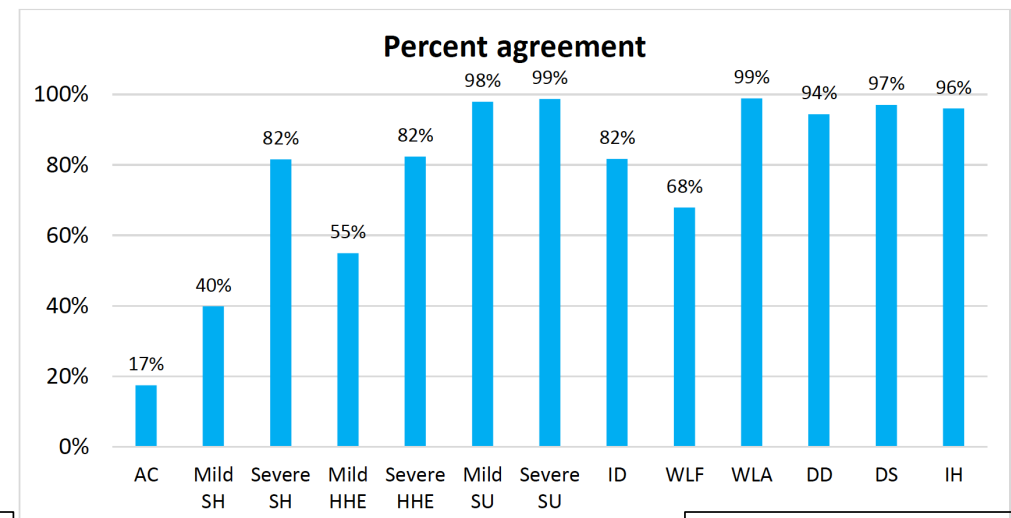
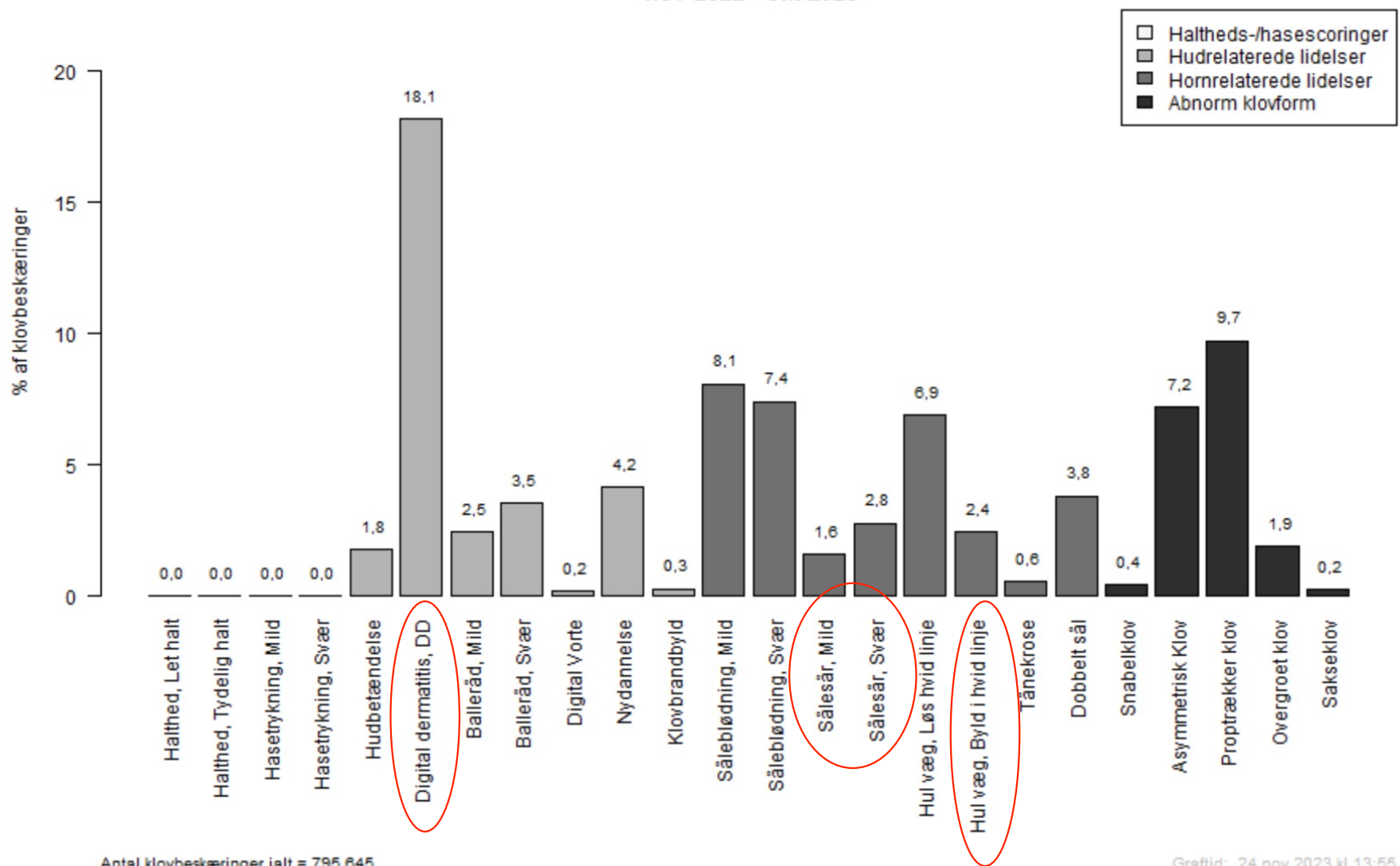


Figure 3, percent agreement between observer and HTs for 13 lesions.

Skovsgaard, 2018

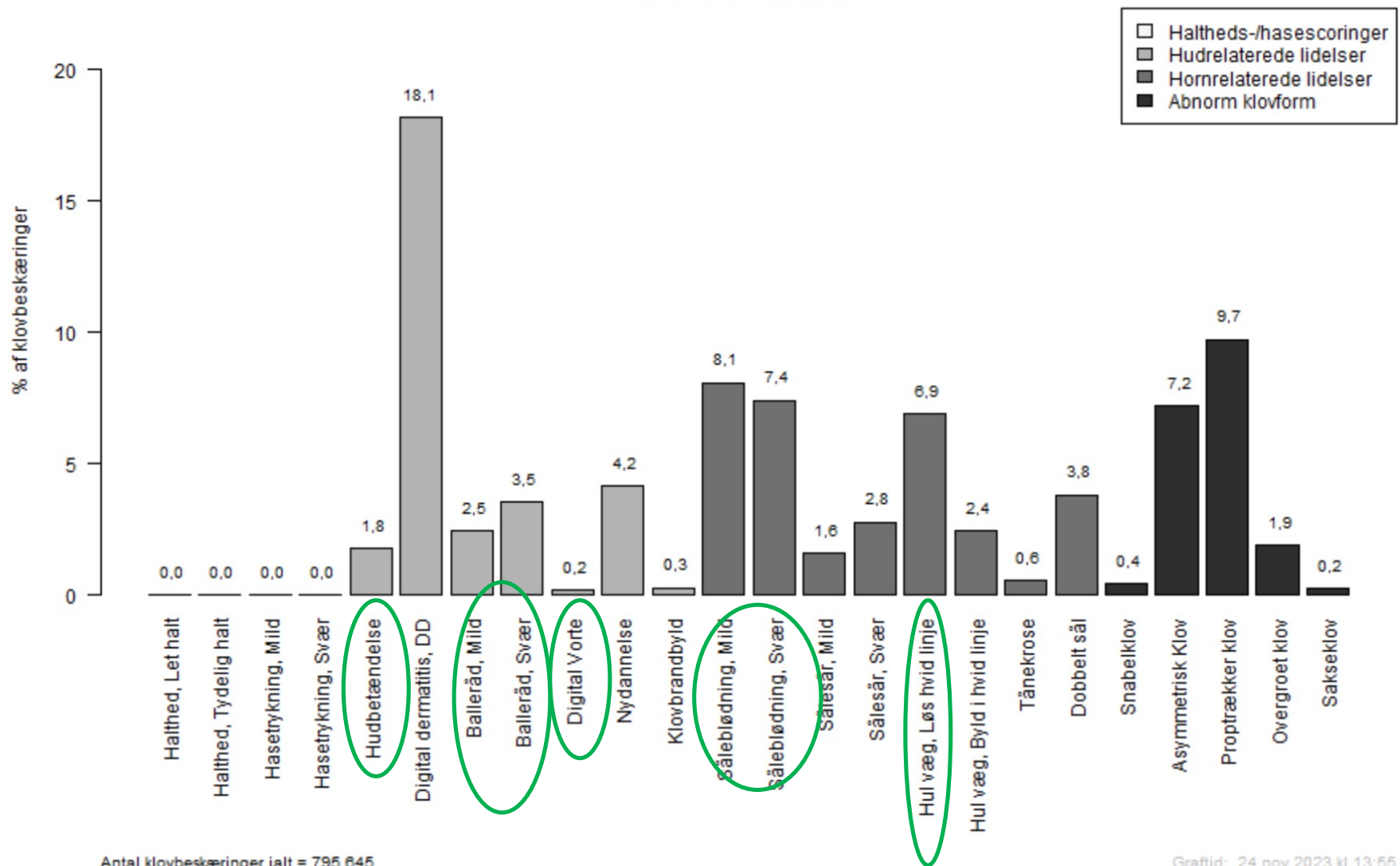
**Klovbeskæringer**  
**Total**  
**nov 2022 - okt 2023**



Antal klovbeskæringer ialt = 795.645

Graftid: 24 nov 2023 kl 13:55

**Klovbeskæringer**  
**Total**  
**nov 2022 - okt 2023**



Antal klovbeskæringer ialt = 795.645

Graftid: 24 nov 2023 kl 13:55







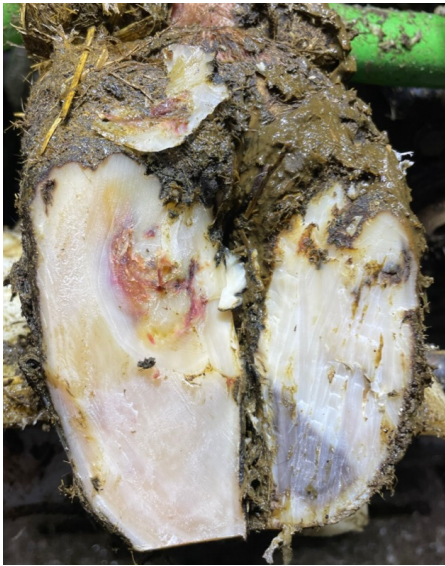
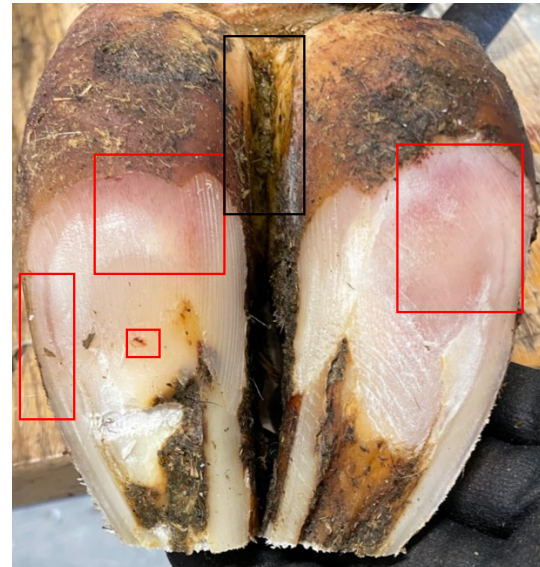
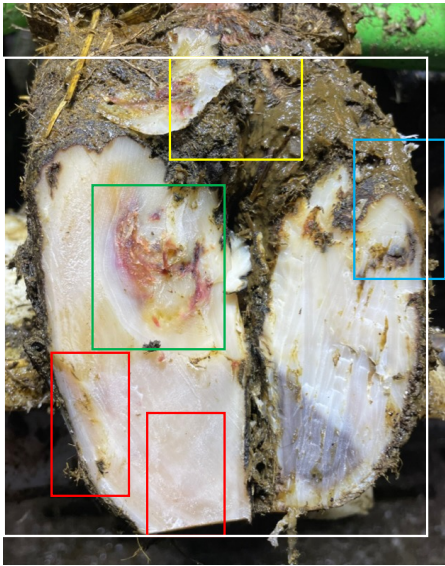








# Training AI





## Next

- Applying AI algorithm on photos from trimming chutes
- Comparing Artificial with Natural intelligence

# Thank You



**Mælke**afgiftsfonden



Ministeriet for Fødevarer,  
Landbrug og Fiskeri

godp